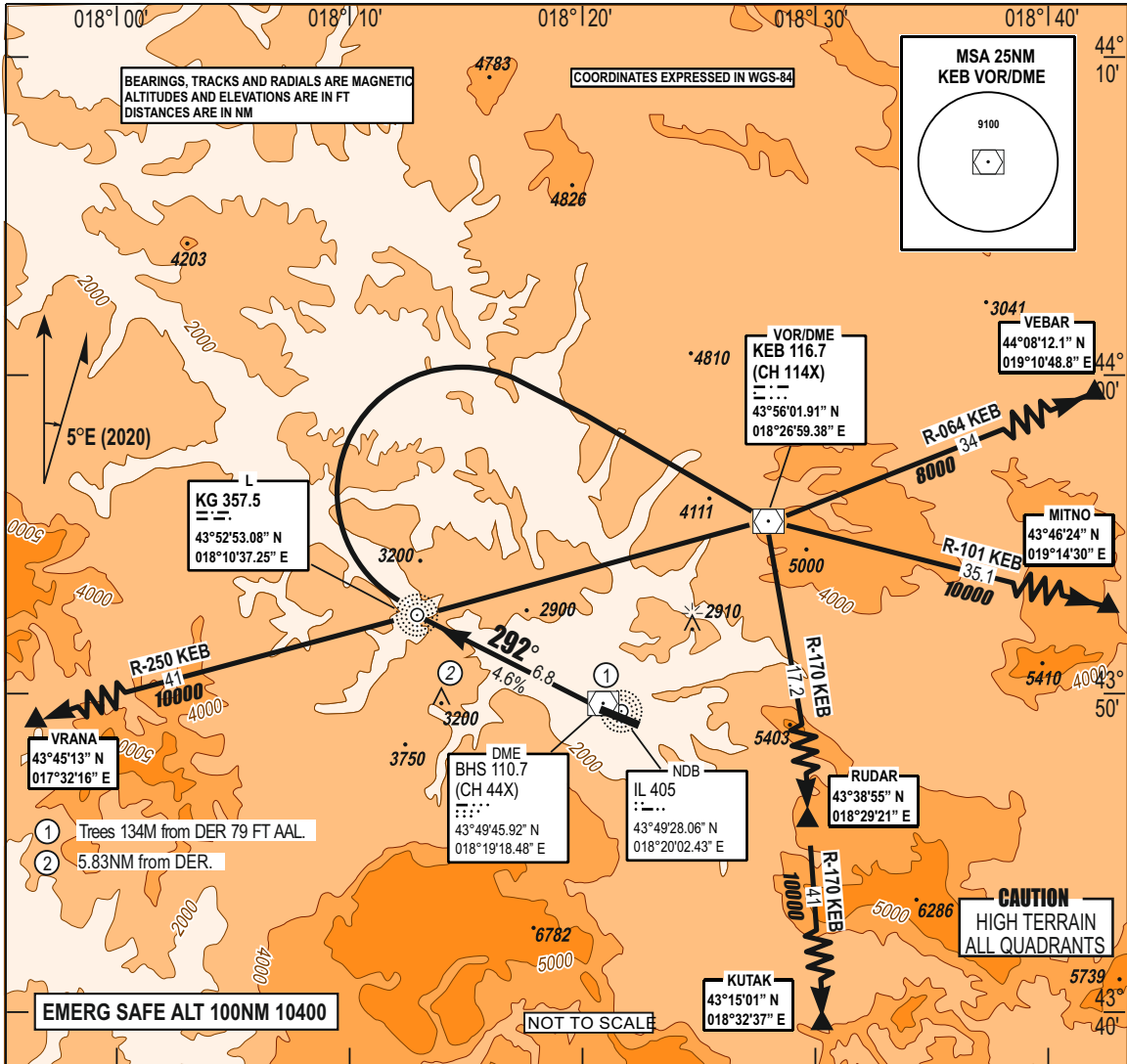


STANDARD DEPARTURE AD ELEV 1705 FT **TRANSITION** APP 136.450; 119.775 **SARAJEVO (LQSA)**
CHART INSTRUMENT HEIGHTS RELATED TO ALTITUDE TWR 118.250
 THR RWY 11 ELEV 1643 FT 10 000 FT GND 121.900 VEBAR 1A, KUTAK 1A
(SID) - ICAO VAR 5°E (2020) ATIS 124.125 MITNO 1C, VRANA1C RWY 29



SID	DEPARTURE ROUTE DESCRIPTION
VEBAR 1A, KUTAK 1A MITNO 1C, VRANA 1C RWY 29	Climb direct KG (1). Over KG turn right direct to KEB (2), then as cleared by ATC. (1) Minimum climb rate 4.6% from DER to 4300 FT. The minimum slope gradient disregards the trees at 134 M from DER and 134 M north of RWY centreline, altitude 1722 FT. (2) Cross KEB at or above 6000 FT.

CHG: AD ELEV.;

RWY	KNOTS	60	120	180	240	300	360
29*	W-FPM	280	560	840	1120	1400	1680

* CLIMB RATE 4.6% MINIMUM CLIMB RATE TO 4300 FT

THIS PAGE INTENTIONALLY LEFT BLANK